

3. Posaune

1. Sinfonie (1986)

Friedrich Radermacher

Allegro
♩ = 120

9 *f* *p* *rit.*

15 *a tempo* *f* *mf*

22 *p*

30 *f* *mf*

40 *pp*

46 *mf* *p* *pp* *mf*

51 *poco rit.* **A** *a tempo* *weich* *pp*

64 *pp*

72 *ff*

80 B 4 3 2

fff *ffp* *sfz*

91 3 2 5 *ff*

103 5 *ff*

113 6 2

124 7 rit. *pp*

135 C a tempo 6 poco rit. 2 - D a tempo *f*

146 *sfz*

152 *ff*

158

164

171

2 E 9

ff

184

ff

2. Satz

Poco adagio
♩ = 68

24

pp

218

3 F 3

p *mf* *f*

229

5

ppp

241

G Più mosso 8

pp

254

10 H 16

f

283

2 con sord.

p

290

7 rit. 2

f

302 **I** Tempo 1
senza sord.

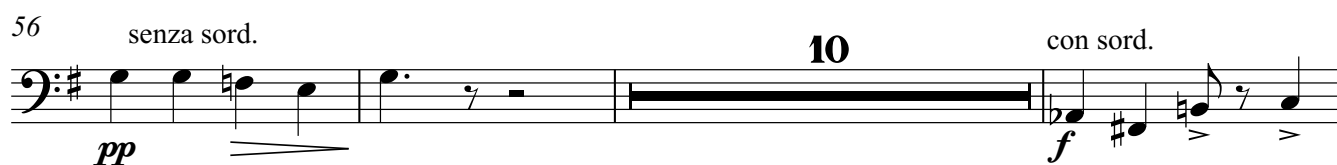
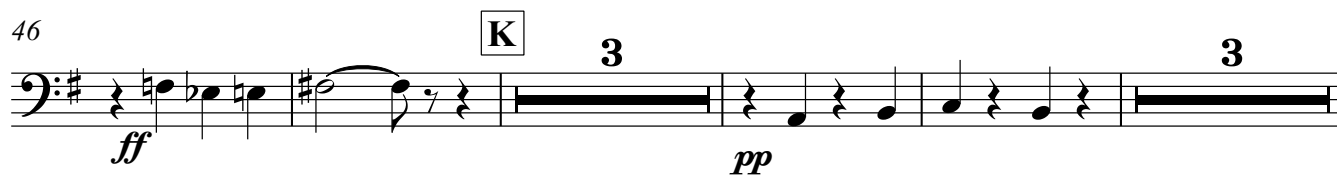
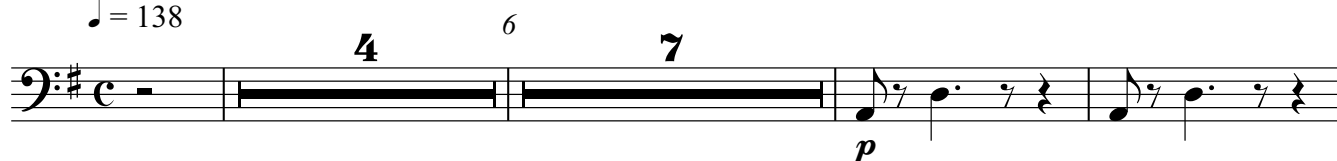


324 a tempo



Allegro moderato

♩ = 138



69 **2** senza sord. *ff*

75 **L** **5** con sord. *pp* **28**

110 **M** senza sord. *p* **3** *mf*

118 **3** *mf*

126 **7** *f* **5**

142 **N** **11** *pp* **5** *pp*

161 **10** con sord. *f*

174 **2** senza sord. *ff* rit.

4. Satz

Adagio
♩ = 72

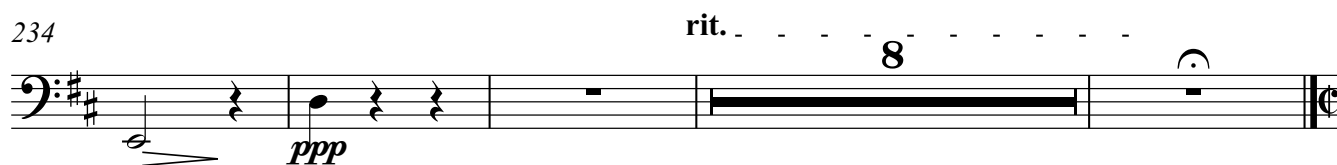
15 *ppp* **2** rit.

201 a tempo **25**

227



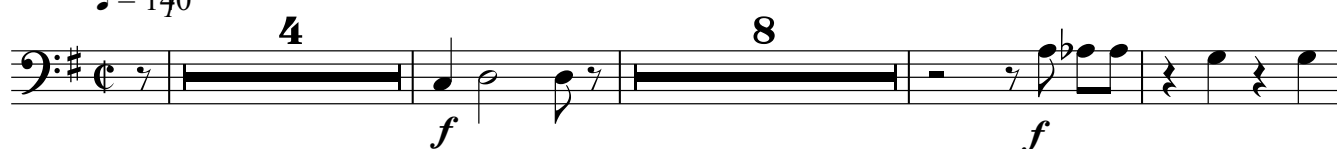
234



5. Satz

Allegro con brio

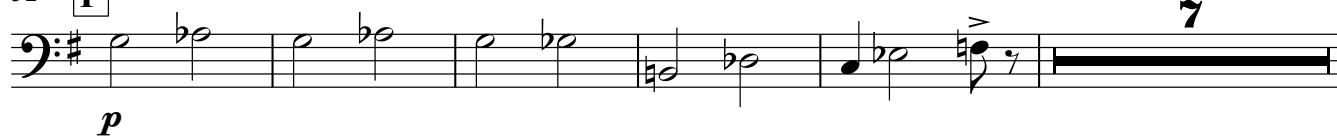
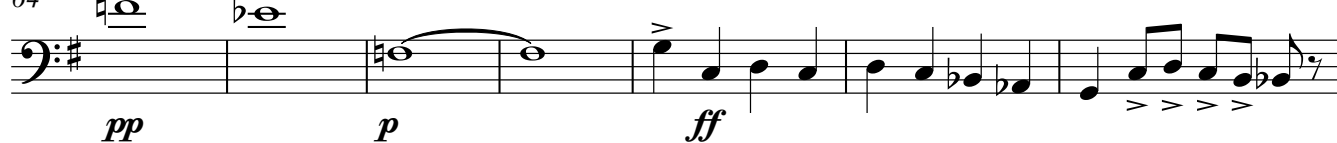
♩ = 140



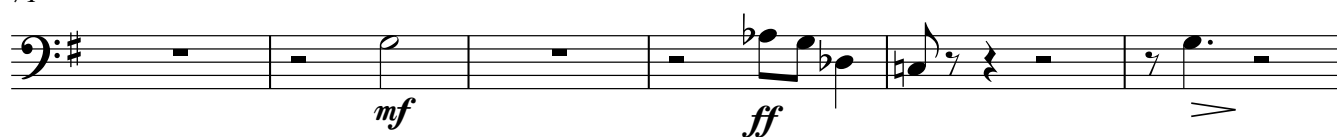
16

30 O

48 con sord.

52 P senza sord.64 O con sord.

71



77 **7** **Q** **5** senza sord.
pp *f*

93 *p* **3** con sord. *f* molto vibrato

101 **4** **R** **7** senza sord. *f*

115 *ff* *p* **10**

130 **S** **20** con sord. *f* **4** senza sord. *f*

157 **T** *f*

162 **8** *ff*

174 *fff*

181 *f* *ff*

188